



Lustre Update

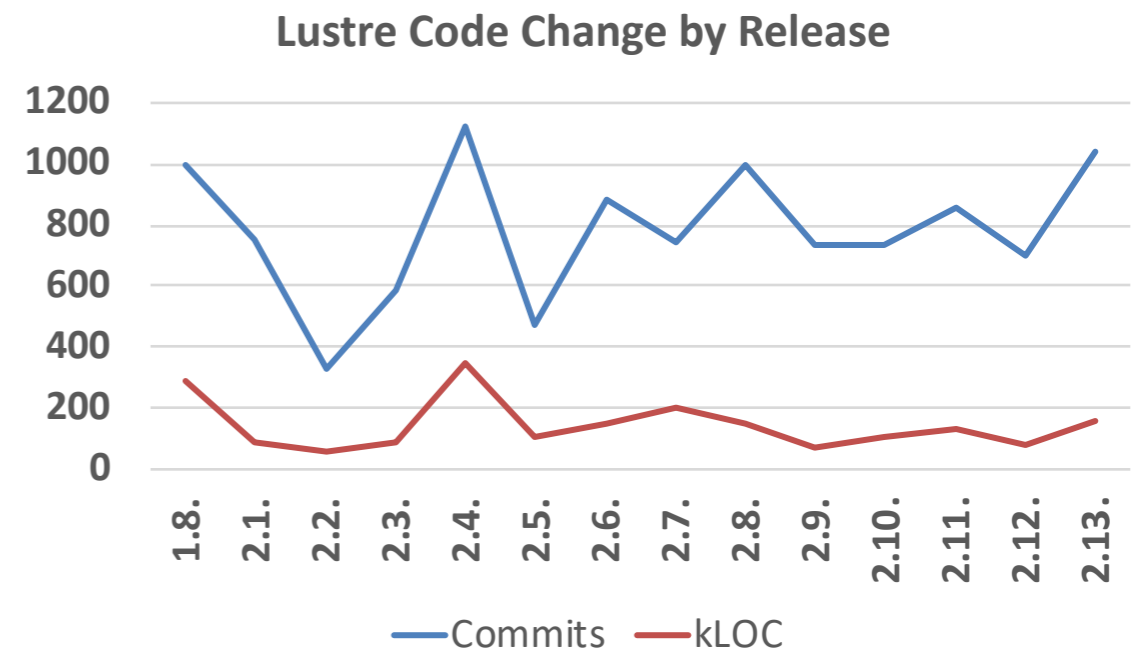
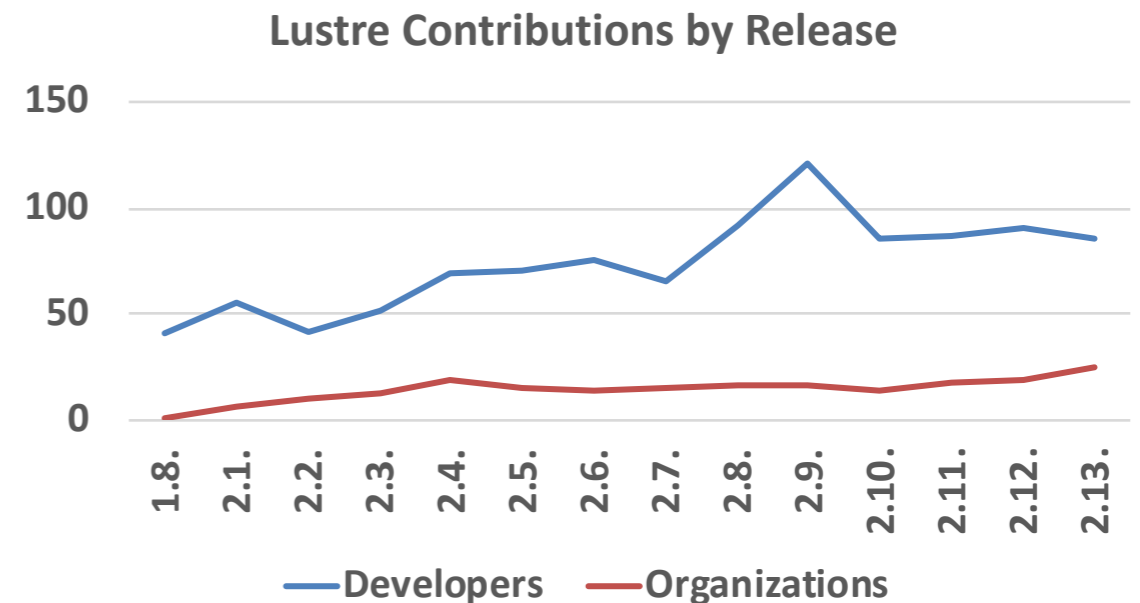
December 15th 2020

Peter Jones, Whamcloud

OpenSFS Lustre Working Group

A Decade of Community Development

- Prior to OpenSFS designating the canonical release and the kernel-style contribution model, external contributions were rare
 - Lustre 1.8 (2009) had no external contributions
 - Lustre 2.13 (2019) had contributions from 85 developers from 25 organizations
- Over the last ten years we have had Lustre code contributions from
 - 45 distinct organizations
 - 217 individual developers

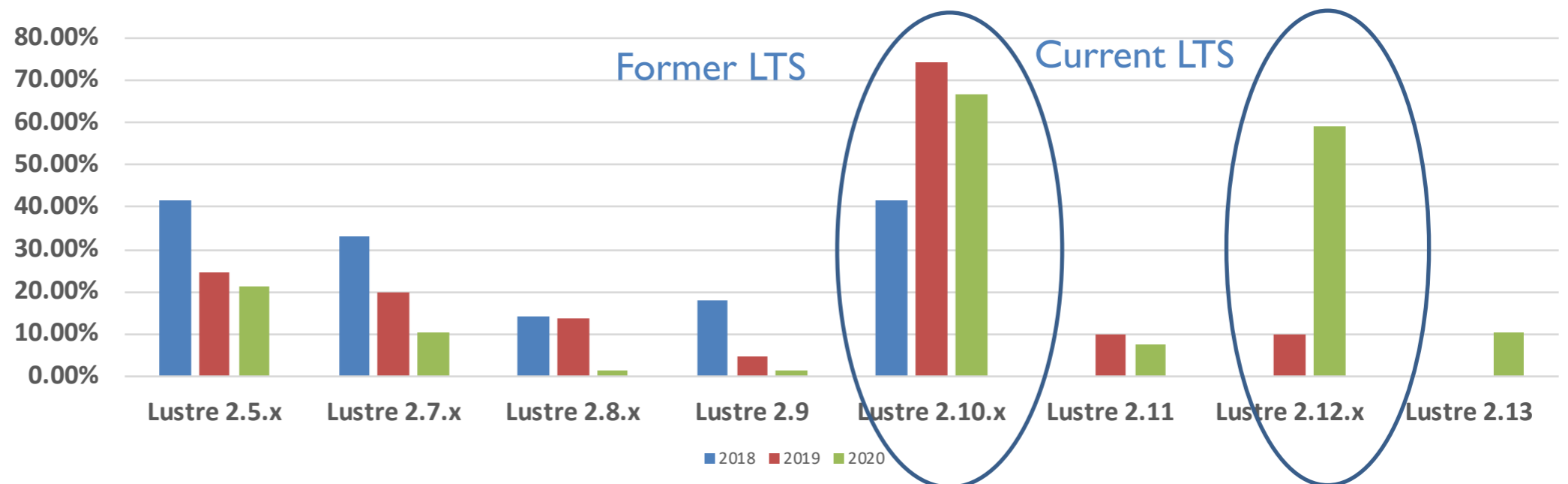


Data courtesy of Dustin Leverman (ORNL)

Lustre 2.12.x LTS

- Lustre 2.12.6 went GA on Dec 9th
 - RHEL 7.9 servers/clients
 - RHEL 7.9/RHEL 8.3/SLES12 SP5/Ubuntu 20.04 clients
 - Support for building with MOFED 5.x
 - testing still focused on MOFED 4.9.x
 - http://wiki.lustre.org/Lustre_2.12.6_Changelog
- No decision on the next LTS release has been made yet

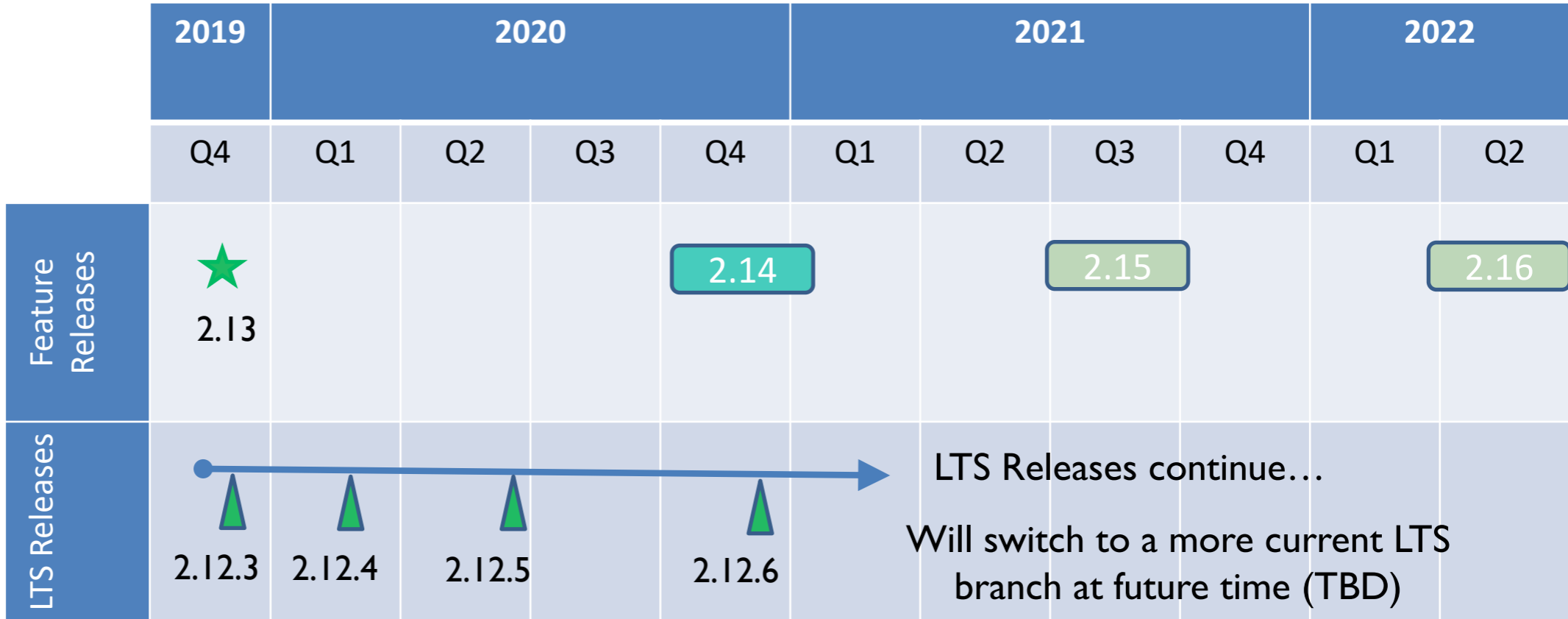
Which Lustre versions do you use in production? (select all that apply)



Lustre 2.14

- In final release testing; should be out late Q4
- OS support
 - RHEL 8.3 servers/clients
 - RHEL 8.3/SLES15 SP2/Ubuntu 20.04 clients
- Interop/upgrades from 2.13 and latest Lustre 2.12.x
- Will ship with ZFS 2.0 by default
- MOFED 5.2
- Number of useful features
 - Client-side Data Encryption (LU-12275)
 - OST Pool Quotas (11023)
 - DNE Auto Restriping (LU-11025)
- http://wiki.lustre.org/Release_2.14.0

Lustre Community Roadmap



LEGEND: Completed Expected Timeline Timeline TBD → LTS Branch

- 2.13**
- [Persistent Client Cache](#)
 - [Multi-Rail Routing](#)
 - [Overstriping](#)

- 2.14**
- [Client Data Encryption](#)
 - [OST Pool Quotas](#)
 - [DNE Auto Restriping](#)

- 2.15**
- [FLR Erasure Coding](#)
 - [Client Directory Encryption](#)
 - [LNet IPv6 Addressing](#)

- 2.16**
- [FLR Immediate Mirror](#)
 - [Metadata Writeback Cache](#)

* Estimates are not commitments and are provided for informational purposes only
 * Fuller details of features in development are available at <http://wiki.lustre.org/Projects>

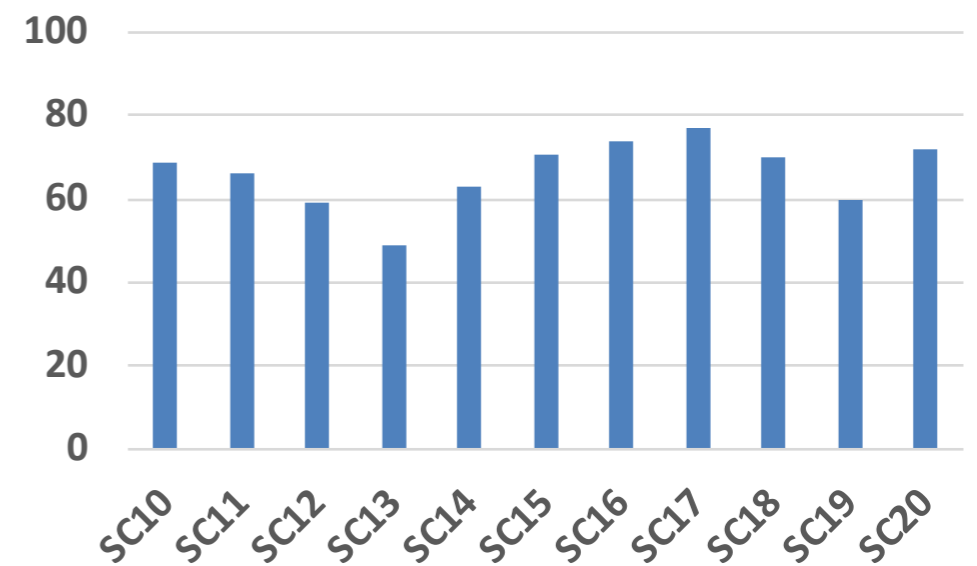


Community Events

- **LUG20**
 - Webinars on June 17th and Sept 9th
 - <http://opensfs.org/lustre-webinar-series/>
 - <https://www.opensfs.org/lustre-webinar-sept-2020/>
- **LAD20**
 - Oct 13th -15th
<https://www.eofs.eu/events/lad20>
- **CLUG**
 - Oct 19th-23rd <http://lustrefs.cn/clug2020/>
- **SC20**
 - Lustre BOF Thursday 19th 11:30-12:45
 - <https://sc20.supercomputing.org/presentation/?id=bof149&sess=sess316>
 - IO-500 BOF Wednesday 18th 4:00-5:15
 - <https://sc20.supercomputing.org/presentation/?id=bof168&sess=sess313>
- **JLUG**
 - Dec 4th <https://www.jlug.info>



Historic Lustre Top 100



Summary

- LTS model has been well adopted; focus switched to 2.12.x LTS
- Lustre 2.12.6 GA
- Lustre 2.14 in final release testing
- Plenty of options for those interested in contributing to Lustre
- LWG [http://wiki.opensfs.org/Lustre Working Group](http://wiki.opensfs.org/Lustre_Working_Group)

Thank you

Open Scalable File Systems, Inc.

3855 SW 153rd Drive
Beaverton, OR 97006
Ph: 503-619-0561
Fax: 503-644-6708
admin@opensfs.org



www.opensfs.org